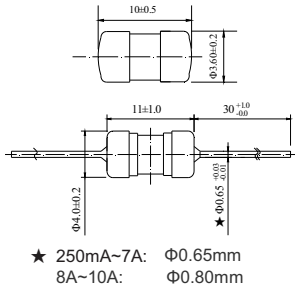


Dimensions (unit in mm)



Main Characteristics

Axial subminiature fuse; Quick-Acting (F)

Standard

IEC-60127-3/III

Materials

Tube: Ceramic Tube
End Caps: Nickel plated brass
Axial Leads: Nickel plated caps
Tin plated copper wires

Operating Temperature

-55°C to +125°C

Storage Conditions

+10°C to +60°C
Relative humidity: $\leq 75\%$ yearly average
Without dew, maximum 30 days at 95%

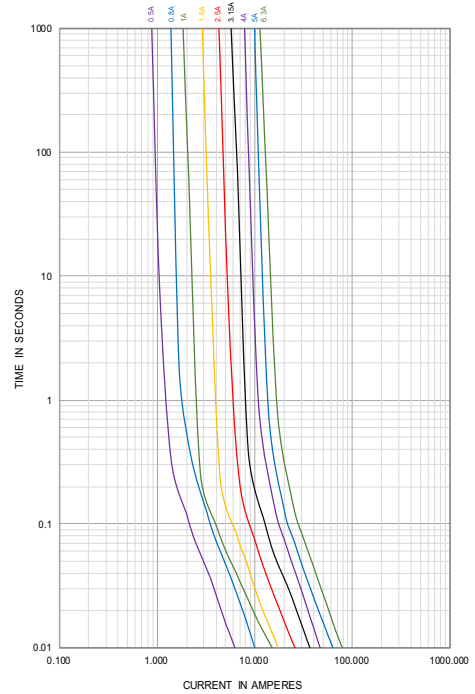
Vibration Resistance

24 cycles at 15 min. each (60068-6)
10-60Hz at 0.75mm amplitude
60-2000Hz at 10g acceleration

Soldering Parameters

260°C ≤ 5 sec (Wave Soldering)
350°C ≤ 3 sec (Hand Soldering)
Soldering Peak:
260°C 10 sec. (IEC 60068-20)

Average Time Current (I-T Curve)



Time vs Current Characteristics: IEC-60127-3/III

Rated Current	150%	210%	275%	400%	1000%
250mA~10A	>1h	<30min	10ms~3s	3ms~300ms	$\leq 20\text{ms}$



Electrical Characteristics

Amp Code	Rated Current	Max. Voltage	Max. Voltage drop (mV)	Max. Power Dissipation (mW)	Nominal Melting I ² t (A ² sec)	Breaking Capacity	Approvals		
							TUV	CQC	cULus
0250	250mA	250V AC	440	289	0.093	50A@125V AC 35A or 10In@250VAC Cosφ=1.0	○	○	●
0300	300mA		420	331	0.131		○	○	●
0315	315mA		400	331	0.152		○	○	●
0350	350mA		390	331	0.172		○	○	●
0375	375mA		380	389	0.203		○	○	●
0400	400mA		370	389	0.23		○	○	●
0500	500mA		350	459	0.384		○	○	●
0630	630mA		320	529	0.656		○	○	●
0750	750mA		310	630	0.941		○	○	●
0800	800mA		300	630	1.00		○	○	●
1100	1.00A		280	375	2.25		○	○	●
1125	1.25A		280	919	2.57		○	○	●
1150	1.50A		250	1050	2.77		○	○	●
1160	1.60A		250	1050	2.89		○	○	●
1200	2.00A		240	1260	2.25		●	○	●
1250	2.50A		200	1313	6.75		○	○	●
1300	3.00A		180	1488	12.86		○	○	●
1315	3.15A		180	1488	13.69		○	○	●
1350	3.50A		170	1488	16.05		○	○	●
1400	4.00A		160	1680	22.09		○	○	●
1500	5.00A		150	1969	39.69		○	○	●
1630	6.30A	150	1969	62.41	●	○	●		
1700	7.00A	150	1969	72.25	50A@125V AC Cosφ=1.0	○	○	●	
1800	8.00A	150	1969	92.16	50A@250V AC Cosφ=1.0	○	○	●	
2100	10.00A	150	1969	156.3		○	○	●	

Note: (1) Permissible continuous operating current is $\leq 100\%$ at ambient temperature of 23°C (73.4°F)
(2) The cULus certification by 125V and 250V; the others certification by 250V.

Ordering Information

Series	Amp Code	Supplementary Code	Qty
333			